

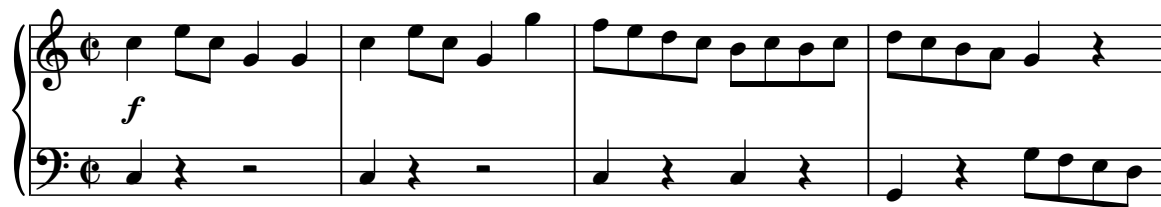
# Sonatina n.1

Op.36



M.Clementi

Allegro ♩ = 160



(16)

Measures 16-19. Treble clef: Measure 16 has a repeat sign and a half note G4. Measure 17 has a half note A4 with a flat. Measure 18 has a half note B4 with a flat. Measure 19 has a half note C5. Bass clef: Measure 16 has a half note G3 with a flat. Measure 17 has a half note A3 with a flat. Measure 18 has a half note B3 with a flat. Measure 19 has a half note C4. Dynamics: *p* in measure 16.

(20)

Measures 20-23. Treble clef: Measure 20 has a half note G4. Measure 21 has a half note A4. Measure 22 has a half note B4 with a flat. Measure 23 has a half note C5. Bass clef: Measure 20 has a half note G3. Measure 21 has a half note A3 with a flat. Measure 22 has a half note B3. Measure 23 has a half note C4. Dynamics: *f* in measure 20.

(24)

Measures 24-27. Treble clef: Measure 24 has a half note G4. Measure 25 has a half note A4. Measure 26 has a half note B4. Measure 27 has a half note C5. Bass clef: Measure 24 has a half note G3. Measure 25 has a half note A3. Measure 26 has a half note B3. Measure 27 has a half note C4. Dynamics: *p* in measure 24.

(28)

Measures 28-31. Treble clef: Measure 28 has a half note G4. Measure 29 has a half note A4. Measure 30 has a half note B4. Measure 31 has a half note C5. Bass clef: Measure 28 has a half note G3. Measure 29 has a half note A3. Measure 30 has a half note B3. Measure 31 has a half note C4. Dynamics: *cresc.* in measure 29, *f* in measure 31.

(32)

Measures 32-35. Treble clef: Measure 32 has a half note G4. Measure 33 has a half note A4. Measure 34 has a half note B4. Measure 35 has a half note C5. Bass clef: Measure 32 has a half note G3. Measure 33 has a half note A3. Measure 34 has a half note B3. Measure 35 has a half note C4.

(36)

Measures 36-39. Treble clef: Measure 36 has a half note G4. Measure 37 has a half note A4. Measure 38 has a half note B4. Measure 39 has a half note C5. Bass clef: Measure 36 has a half note G3. Measure 37 has a half note A3. Measure 38 has a half note B3. Measure 39 has a half note C4.

Andante ♩ = 62

First system (measures 1-3). The key signature has one flat (B-flat). The time signature is 3/4. The tempo is Andante with a quarter note equal to 62 beats per minute. The music features a treble and bass staff. The bass staff has a triplet of eighth notes in the first measure. The treble staff has a fermata over the final note of the third measure.

Second system (measures 4-7). Measure 4 is marked with a circled 4. The music continues with triplets in both staves. A crescendo marking *cresc.* appears in the treble staff at measure 7.

Third system (measures 8-11). Measure 8 is marked with a circled 8. Dynamics include *fz* (forzando), *p* (piano), *cresc.* (crescendo), and *f* (forte). The music features complex rhythmic patterns with triplets and sixteenth notes.

Fourth system (measures 12-15). Measure 12 is marked with a circled 12. Dynamics include *fz* (forzando), *p* (piano), and *f* (forte). The music features complex rhythmic patterns with triplets and sixteenth notes.

Fifth system (measures 16-19). Measure 16 is marked with a circled 16. The music concludes with a *dolce* (dolce) marking in the treble staff. The bass staff features a triplet of eighth notes in the final measure.

(20)

Trills (tr) are indicated above the first and second measures. The first measure has a forte (f) dynamic. The second measure has a dim. (diminuendo) dynamic. The third measure has a triplet (3) and a crescendo (cresc.) dynamic. The fourth measure has a triplet (3) and a crescendo (cresc.) dynamic.

(24)

Measures 24-26. Measure 24 has a forte (f) dynamic and a triplet (3). Measure 25 has a trill (tr) and a wavy line. Measure 26 has a wavy line.

Vivace

Measures 27-32. Measure 27 has a piano (p) dynamic. The piece is in 3/8 time. The music is characterized by rapid sixteenth-note passages in the right hand and eighth-note patterns in the left hand.

(9)

Measures 33-40. Measure 33 has a forte (f) dynamic. Measure 39 has a piano (p) dynamic. The music continues with rapid sixteenth-note passages in the right hand and eighth-note patterns in the left hand.

(18)

Measures 41-48. Measure 41 has a forte (f) dynamic. Measure 42 has a piano (p) dynamic. Measure 43 has a forte (f) dynamic. The music continues with rapid sixteenth-note passages in the right hand and eighth-note patterns in the left hand.

26

dim. *p*

This system contains measures 26 through 33. The right hand features a melodic line with eighth and sixteenth notes, including a key signature change to one sharp (F#) in measure 27. The left hand provides a steady accompaniment of eighth notes. Dynamic markings include *dim.* (diminuendo) in measure 31 and *p* (piano) in measure 33.

34

*pp*

This system contains measures 34 through 41. The right hand continues with a melodic line of eighth and sixteenth notes. The left hand plays a consistent eighth-note accompaniment. A *pp* (pianissimo) dynamic marking is present in measure 34.

42

*f*

This system contains measures 42 through 49. The right hand's melodic line includes some sixteenth-note passages. The left hand maintains the eighth-note accompaniment. A *f* (forte) dynamic marking is placed in measure 42.

51

*p* *f*

This system contains measures 51 through 58. The right hand features a melodic line with eighth and sixteenth notes. The left hand's accompaniment consists of eighth notes. Dynamic markings include *p* (piano) in measure 51 and *f* (forte) in measure 53.

59

*p* *f*

This system contains measures 59 through 64. The right hand continues with a melodic line of eighth and sixteenth notes. The left hand plays eighth-note accompaniment. Dynamic markings include *p* (piano) in measure 59 and *f* (forte) in measure 61.

65

*ff*

This system contains measures 65 through 70, which concludes the piece with a double bar line. The right hand has a melodic line with eighth and sixteenth notes. The left hand plays eighth-note accompaniment. A *ff* (fortissimo) dynamic marking is present in measure 65.